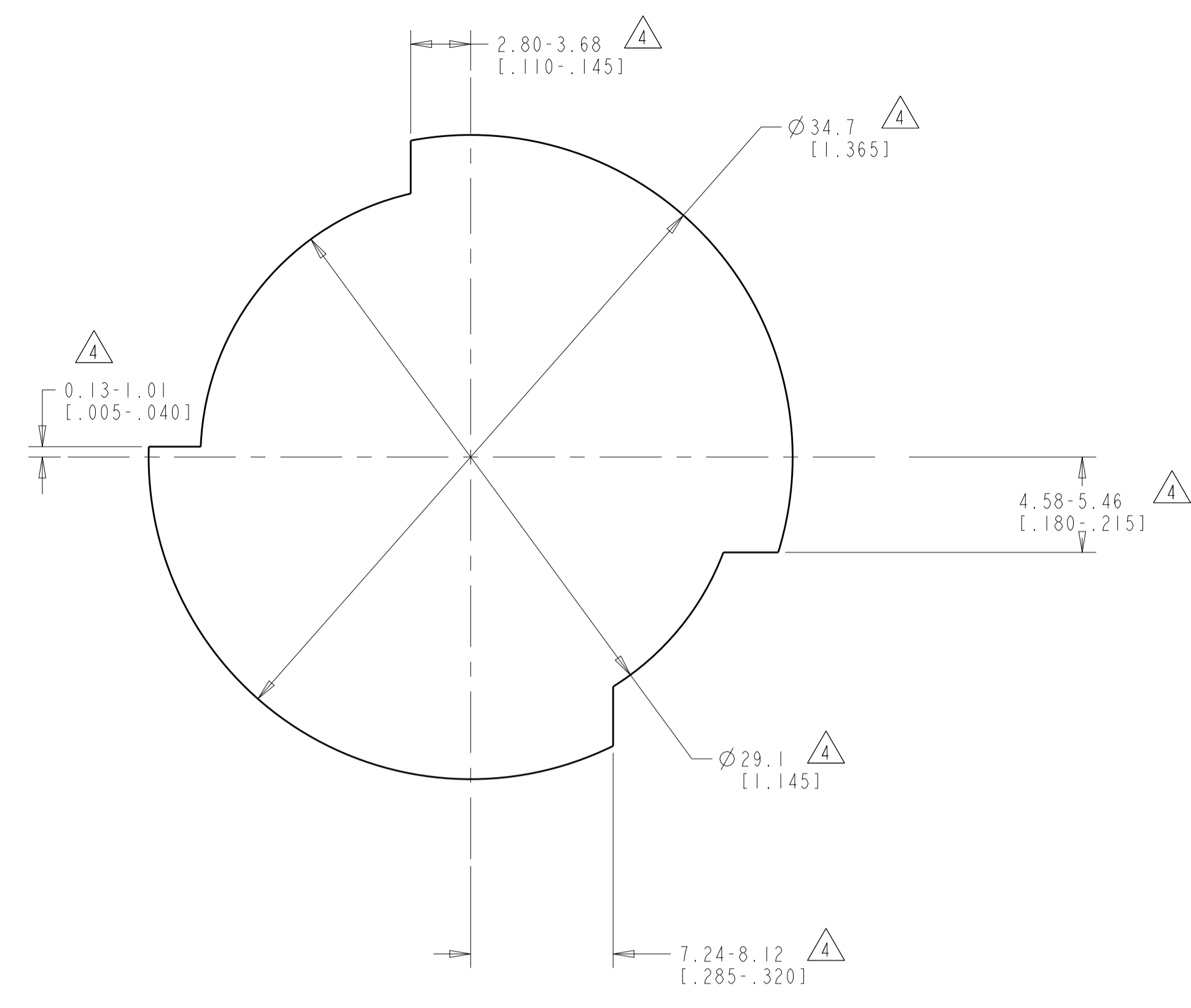
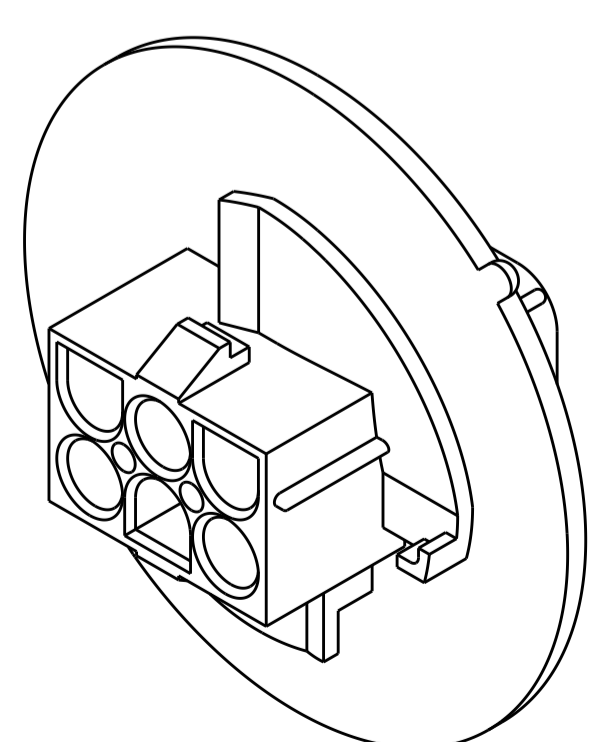
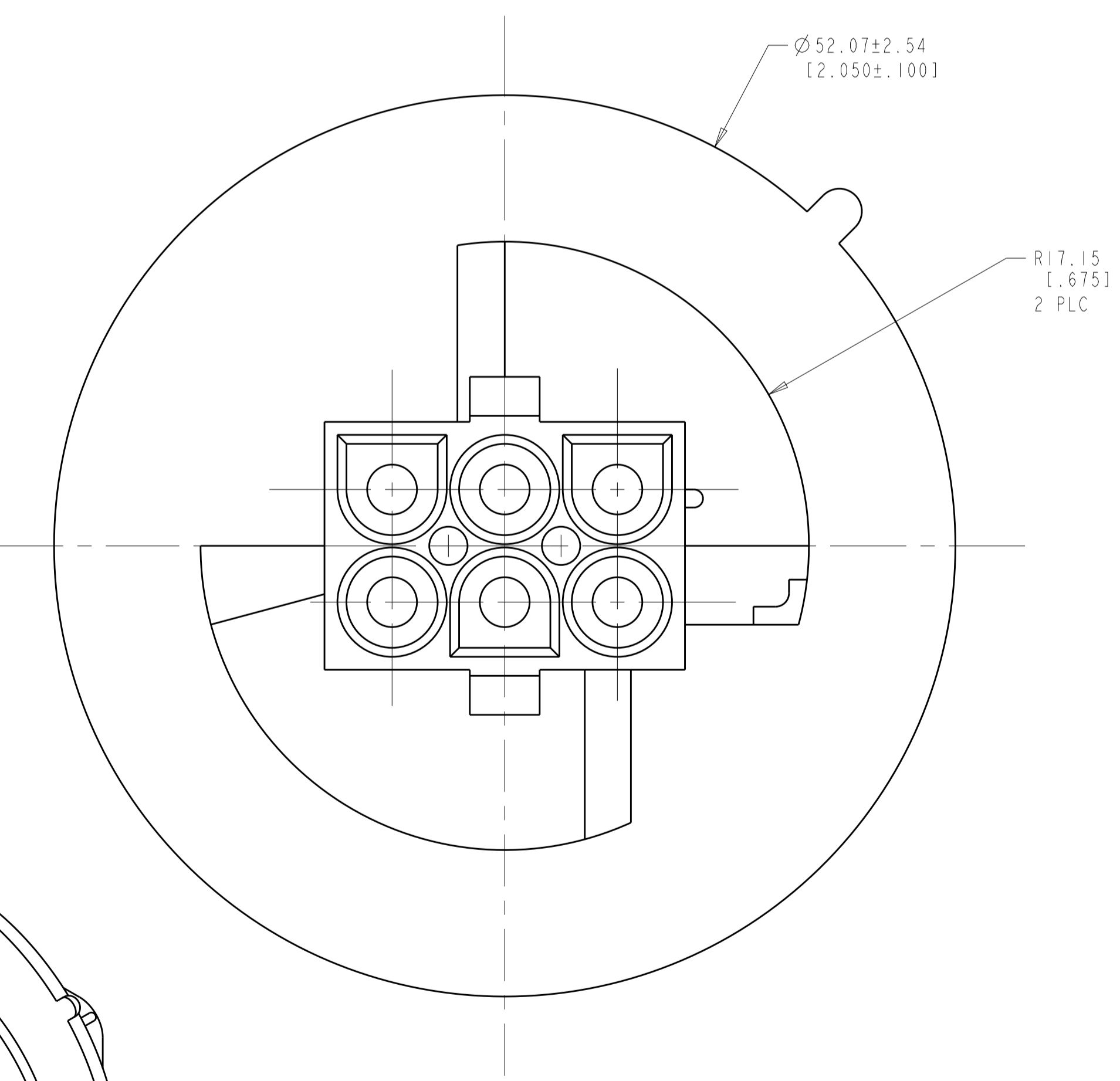


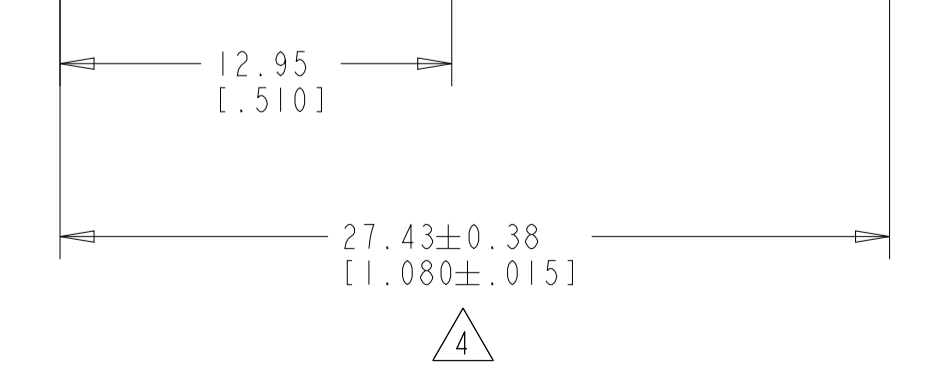
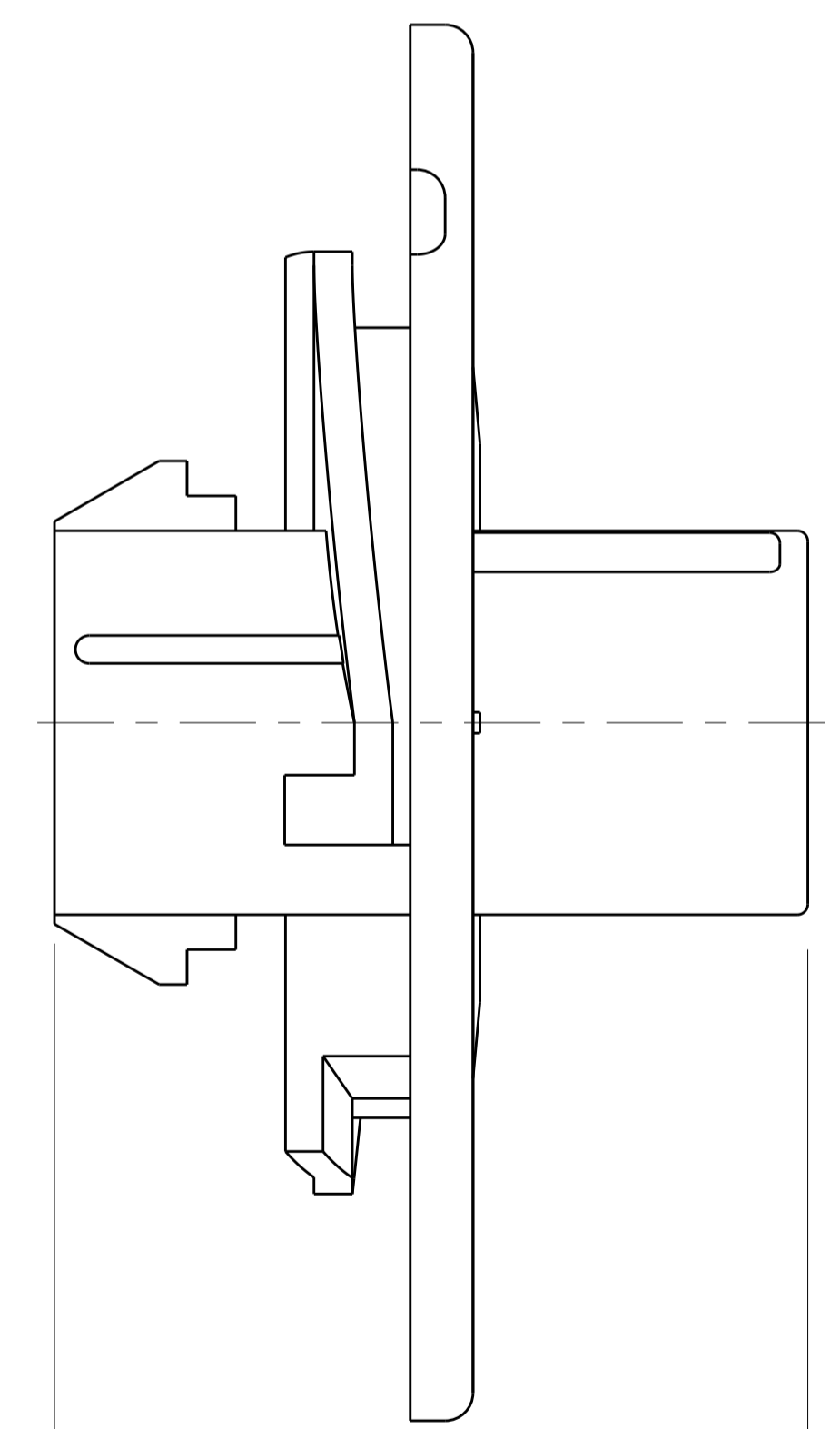
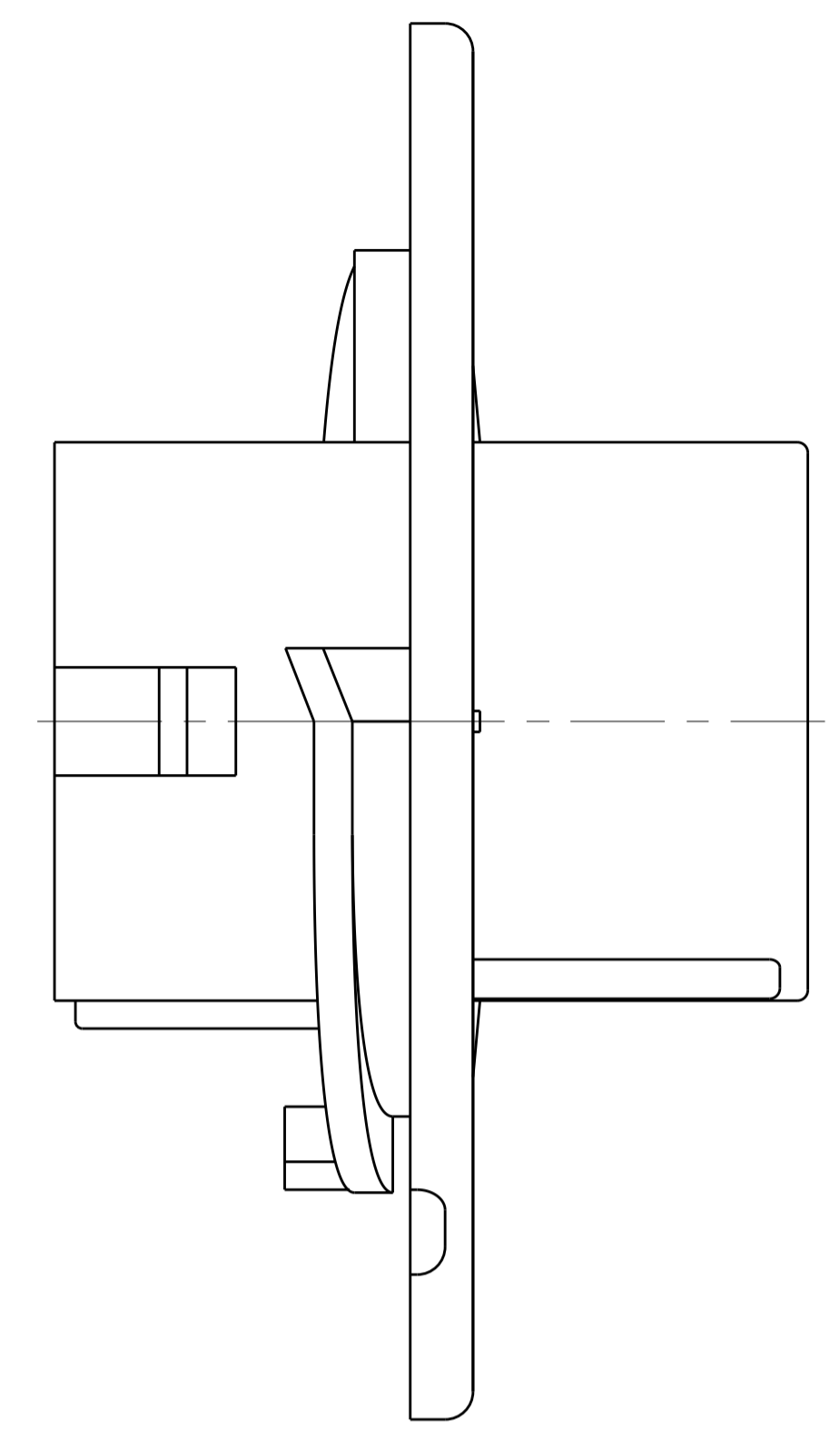
LOC		DIST		REVISIONS			
P	LTN	DESCRIPTION	DATE	DWN	APVD		
C		REVISED PER ECR-10-022954	03MAR2011	HMR	TM		
C1		REVISED PER ECR-14-001377	20APR2015	AV	DZ		



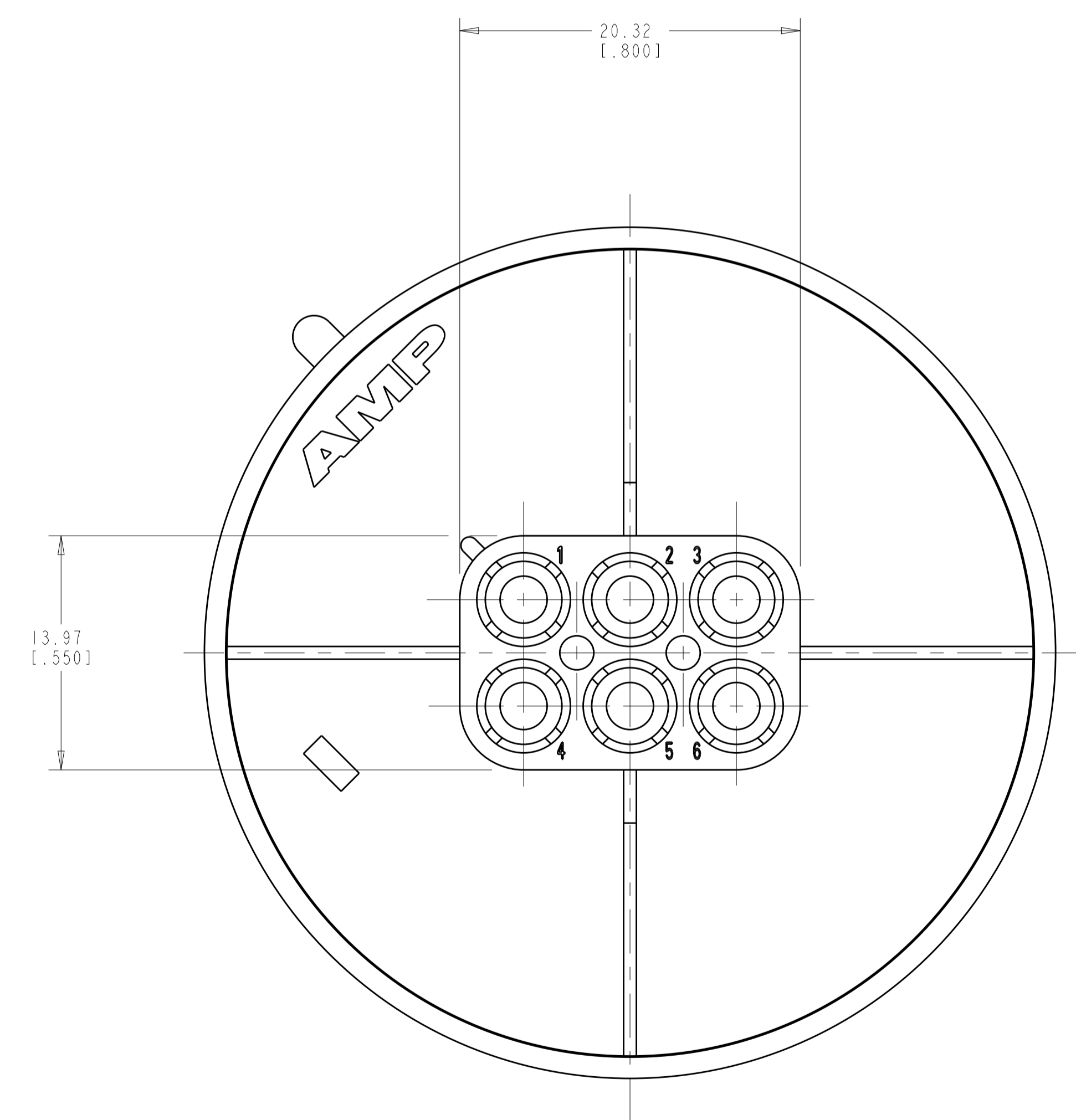
RECOMMENDED CUT OUT



3-DIMENSIONAL MODEL
SCALE 2:1



- MATES WITH APPROPRIATE UNIVERSAL MATE-N-LOK™ PLUG.
- RECOMMENDED PANEL THICKNESS 0.76 - 2.29 [.030 - .090].
- PANEL MUST BE PUNCHED SO THAT THE HOUSING ENTERS THE PANEL IN THE SAME DIRECTION AS THE PUNCH.
- ⚠ DIMENSIONS INDICATED ARE REFERENCE. ADDITIONAL GROWTH DUE TO SUBSEQUENT MOISTURE ABSORPTION MAY OCCUR.
- FLAMMABILITY V-2 FOR THICKNESS 0.38mm, 0.75mm, 1.5mm AND 3.0mm PER IEC 60695-11-10.
- GLOW-WIRE FLAMMABILITY (GWFI) 800°C FOR THICKNESS 0.38mm AND 0.75mm PER IEC 60695-2-12.
- GLOW-WIRE FLAMMABILITY (GWFI) 960°C FOR THICKNESS 1.5mm AND 3.0mm PER IEC 60695-2-12.
- GLOW-WIRE IGNITION (GWIT) 825°C FOR THICKNESS 0.38mm, 0.75mm, 1.5mm, AND 3.0mm PER IEC 60695-2-13.



0.460 IN ³	1586887-1
VOLUME	PART NUMBER

THIS DRAWING IS A CONTROLLED DOCUMENT.		DWN: R. WHITAKER 07AUG2007	TE Connectivity
DIMENSIONS: mm [INCHES]		CHK: D. COLEY 07AUG2007	
TOLERANCES UNLESS OTHERWISE SPECIFIED:		APVD: D. COLEY 07AUG2007	NAME: CAP. 6 CIRCUIT, UNIVERSAL MATE-N-LOK(TM), SPECIAL
0 PLC ±	1 PLC ±	PRODUCT SPEC	SIZE: A1
2 PLC ±0.511(.020)	3 PLC ±	APPLICATION SPEC	CAGE CODE: 00779
4 PLC ±	5 PLC ±	WEIGHT	DRAWING NO: 1586887
ANGLES: 40° 30'	FINISH	CUSTOMER DRAWING	SCALE: 4:1
MATERIAL: NYLON UL 94V-2, NATURAL			SHEET 1 OF 1

